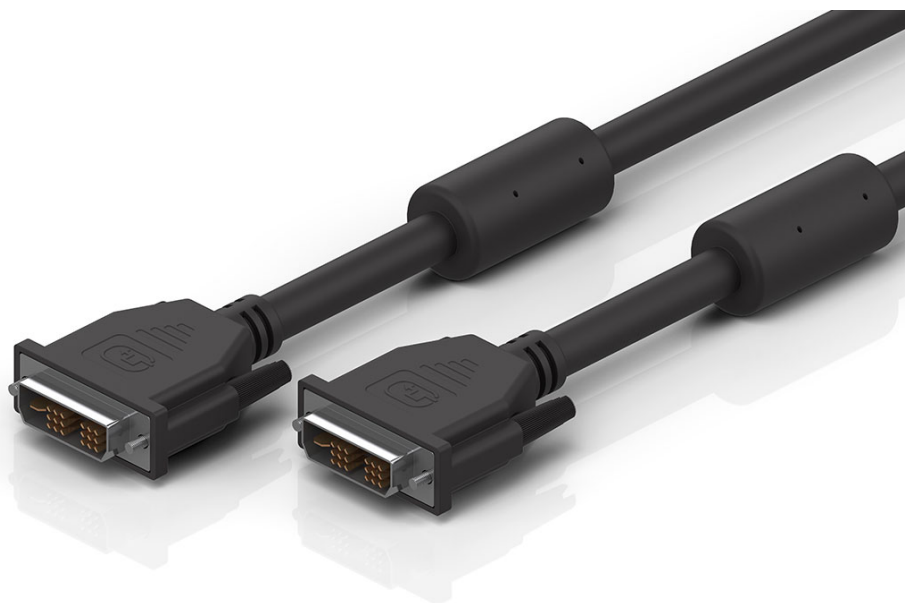


C9900-K528,-K529,-K534...K537,-K688 | Display cable, shielded, PVC, 14 x AWG24, fixed installation, black



DVI-D, plug, straight, male, 18 + 1-pin – DVI-D, plug, straight, male, 18 + 1-pin



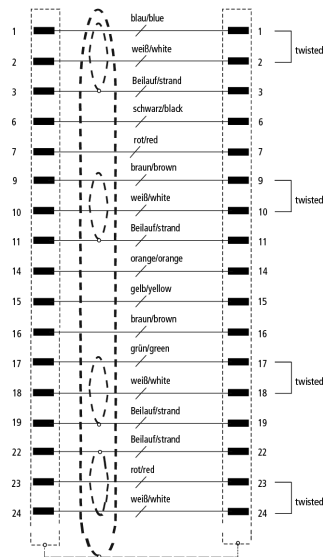
Plugs

| Electrical data | Head A | Head B |
|----------------------------|------------|------------|
| Rated voltage | 40 V (AC) | 40 V (AC) |
| Rated current | 1.5 A | 1.5 A |
| Dielectric strength | 500 V | 500 V |
| Shielding | yes | yes |
| Contact resistance | < 30 mΩ | < 30 mΩ |
| Mechanical data | | |
| Installation size | DVI-D | DVI-D |
| Connector type | plug | plug |
| Configuration | straight | straight |
| Contact type | male | male |
| Number of positions (face) | 18 + 1-pin | 18 + 1-pin |
| Way of locking | screw | screw |
| Body color | black | black |

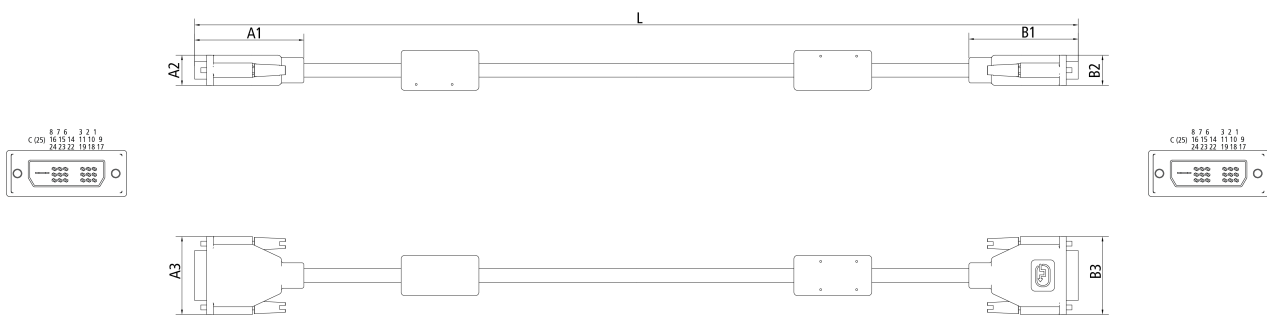
| | | |
|---------------------------|-------|-------|
| Body material | PBT | PBT |
| Contact carrier color | black | black |
| Environmental data | | |
| RoHS compliant | yes | yes |
| Protection rating | IP20 | IP20 |

Cable

| | | |
|---|---|--|
| Electrical data | | |
| Operating voltage | 30 V | |
| Wire resistance | 24 AWG $\leq 93 \Omega/\text{km}$ (20 °C) | |
| Characteristic impedance | 100 $\Omega \pm 10 \Omega$ | |
| Mechanical data | | |
| Outer cable diameter | 10.0 mm ± 0.2 mm (0.3937" ± 0.0079 ") | |
| Conductor material | copper, tinned | |
| Shielding | yes | |
| Optical covering factor of shielding | $\geq 85\%$ | |
| Use | fixed installation | |
| UL-Style | AWM 20276 (80°C/30V) | |
| Jacket color | black | |
| Material jacket | PVC (polyvinyl chloride) | |
| Wire color code | white, brown, white, red, white, green, white, blue, black, brown, red, orange, yellow | |
| Printing on the jacket | E301195 UR AWM 20276 80°C 30V VW-1 DVI DIGITAL SINGLE LINK T7 network cables for professional performance | |
| Environmental data | | |
| Operation temperature range, fixed installation | -10...+80 °C, +14...+176 °F | |
| Contact assembly | | |



Dimensions



| | |
|----|---------|
| A1 | 57.6 mm |
| A2 | 13.5 mm |
| A3 | 40.0 mm |
| B1 | 57.6 mm |
| B2 | 13.5 mm |
| B3 | 40.0 mm |

Notes

- Depending on the cable length (L), the following length tolerances apply:
7.5 m : ± 60 mm | 10.0 m : ± 100 mm | 15.0 : ± 150 mm | 20.0 m ... 30.0 m : ± 200 mm | 40.0 m ... 50.0 m : ± 300 mm
- Illustrations similar
- Further cable length on request.

| | |
|--------|-----|
| CE, UL | |
| CE | yes |

| Ordering information | Length |
|----------------------|---------|
| C9900-K688 | 7.50 m |
| C9900-K528 | 10.00 m |
| C9900-K529 | 15.00 m |
| C9900-K534 | 20.00 m |
| C9900-K535 | 30.00 m |
| C9900-K536 | 40.00 m |
| C9900-K537 | 50.00 m |



Products marked with a crossed-out wheeled bin shall not be discarded with the normal waste stream. The device is considered as waste electrical and electronic equipment. The national regulations for the disposal of waste electrical and electronic equipment must be observed.

Beckhoff®, TwinCAT®, TwinCAT/BSD®, TC/BSD®, EtherCAT®, EtherCAT G®, EtherCAT G10®, EtherCAT P®, Safety over EtherCAT®, TwinSAFE®, XFC®, XTS® and XPlanar® are registered trademarks of and licensed by Beckhoff Automation GmbH. Other designations used in this publication may be trademarks whose use by third parties for their own purposes could violate the rights of the owners.

© Beckhoff Automation GmbH & Co. KG 07/2023

The information provided in this brochure contains merely general descriptions or characteristics of performance which in case of actual application do not always apply as described or which may change as a result of further development of the products. An obligation to provide the respective characteristics shall only exist if expressly agreed in the terms of contract.