

Documentation

FC7501 and FC7502

SERCOS interface PCI Cards

Version: 2.0
Date: 2017-11-17

BECKHOFF

Table of contents

1 Foreword	5
1.1 Notes on the documentation	5
1.2 Safety instructions	6
2 Product overview	7
2.1 System description	7
2.2 Hardware	8
2.3 Technical Data	10
3 Installation	11
3.1 Installation of the SERCOS card in the PC	11
3.2 Installation of the PCI driver	12
4 Configuration	13
4.1 Configuration	13
4.2 The FC750x tab	14
4.3 The Timing (Online/Offline) tab	16
4.4 Online tab	17
4.5 DPRAM (Online) tab	17
5 Diagnostic inputs	18
6 Appendix	20
6.1 Support and Service	20

1 Foreword

1.1 Notes on the documentation

Intended audience

This description is only intended for the use of trained specialists in control and automation engineering who are familiar with the applicable national standards.

It is essential that the documentation and the following notes and explanations are followed when installing and commissioning these components.

It is the duty of the technical personnel to use the documentation published at the respective time of each installation and commissioning.

The responsible staff must ensure that the application or use of the products described satisfy all the requirements for safety, including all the relevant laws, regulations, guidelines and standards.

Disclaimer

The documentation has been prepared with care. The products described are, however, constantly under development.

We reserve the right to revise and change the documentation at any time and without prior announcement.

No claims for the modification of products that have already been supplied may be made on the basis of the data, diagrams and descriptions in this documentation.

Trademarks

Beckhoff®, TwinCAT®, EtherCAT®, Safety over EtherCAT®, TwinSAFE®, XFC® and XTS® are registered trademarks of and licensed by Beckhoff Automation GmbH.

Other designations used in this publication may be trademarks whose use by third parties for their own purposes could violate the rights of the owners.

Patent Pending

The EtherCAT Technology is covered, including but not limited to the following patent applications and patents: EP1590927, EP1789857, DE102004044764, DE102007017835 with corresponding applications or registrations in various other countries.

The TwinCAT Technology is covered, including but not limited to the following patent applications and patents: EP0851348, US6167425 with corresponding applications or registrations in various other countries.



EtherCAT® is registered trademark and patented technology, licensed by Beckhoff Automation GmbH, Germany

Copyright

© Beckhoff Automation GmbH & Co. KG, Germany.

The reproduction, distribution and utilization of this document as well as the communication of its contents to others without express authorization are prohibited.

Offenders will be held liable for the payment of damages. All rights reserved in the event of the grant of a patent, utility model or design.

1.2 Safety instructions

Safety regulations

Please note the following safety instructions and explanations!
Product-specific safety instructions can be found on following pages or in the areas mounting, wiring, commissioning etc.

Exclusion of liability






All the components are supplied in particular hardware and software configurations appropriate for the application. Modifications to hardware or software configurations other than those described in the documentation are not permitted, and nullify the liability of Beckhoff Automation GmbH & Co. KG.

Personnel qualification

This description is only intended for trained specialists in control, automation and drive engineering who are familiar with the applicable national standards.

Description of symbols

In this documentation the following symbols are used with an accompanying safety instruction or note. The safety instructions must be read carefully and followed without fail!

 DANGER	Serious risk of injury! Failure to follow the safety instructions associated with this symbol directly endangers the life and health of persons.
 WARNING	Risk of injury! Failure to follow the safety instructions associated with this symbol endangers the life and health of persons.
 CAUTION	Personal injuries! Failure to follow the safety instructions associated with this symbol can lead to injuries to persons.
 Attention	Damage to the environment or devices Failure to follow the instructions associated with this symbol can lead to damage to the environment or equipment.
 Note	Tip or pointer This symbol indicates information that contributes to better understanding.

2 Product overview

2.1 System description

SERCOS is an open, fast bus system that has been the international standard (IEC 61491) for numerically controlled machines since 1995. Meeting high real-time requirements and interference-proof transfer in optical fiber technology are important features of this bus system, which is widely used for drive technology applications. The bus consists of a master and of a number of slaves. In a SERCOS system, the servo drives or the BK7500 SERCOS Bus Coupler represent the slaves.

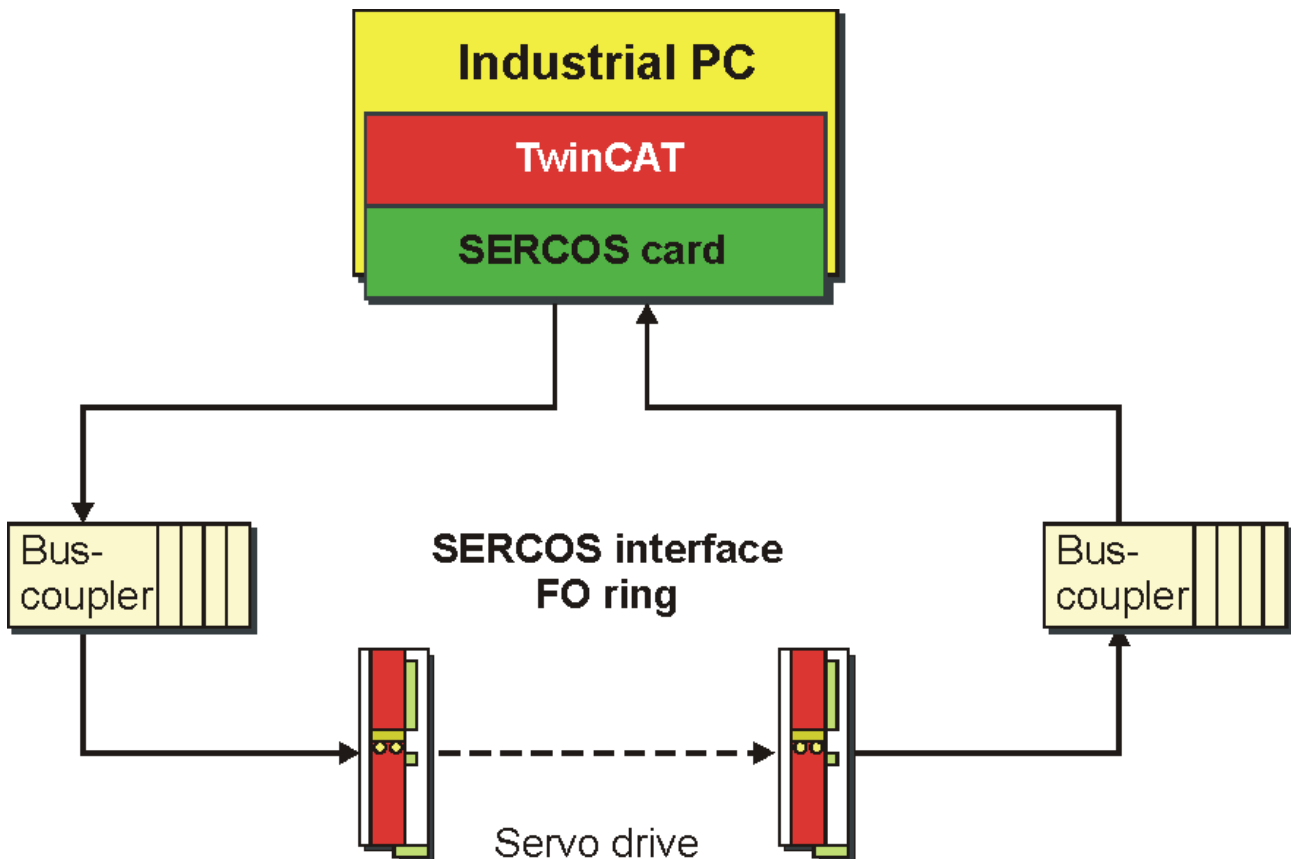


Fig. 1: SERCOS interface optical fiber ring

The bus topology is a ring system, in which it is possible to operate up to 254 stations. The data transfer rate is 2, 4, 8 or 16 Mbit/s. There are basically three types of telegram:

1. The master-sync telegram is received by all the slaves, and is used for synchronization.
2. The master data telegram is also received by all the slaves, and contains the cyclic data and the service data.
3. The slaves send their data in the form of a drive telegram.

PC Fieldbus Cards for SERCOS Interface

Beckhoff specially developed the fieldbus cards FC7501 (single-channel) and FC7502 (double-channel) with PCI interface for the SERCOS interface. The driver integrated in the TwinCAT automation software ensures optimum performance of these passive master cards, so that compared with an active solution there are no unnecessary restrictions with regard to the number of devices or the data length. This also enables larger SERCOS projects with more than 50 axes to be realized. To do so several PCs are precisely synchronized via SERCOS, whereby one PC is defined as the master and all the others as slaves. For these applications it is interesting that the FC7502 double-channel card can handle one master ring and one slave ring. The parameterization of the master/slave mode is carried out simply through the software.

Bus Coupler for SERCOS interface

A further advantage results from the use of Beckhoff Bus Terminals with the BK7500 SERCOS Bus Coupler, which enables the high data rate, short cycle time and high deterministic features of SERCOS also to be used for classic I/O technology. Up to 64 the Bus Terminals for different analog or digital signals can be coupled to a single Bus Coupler. Machine manufacturers with a high drive consumption and low I/O consumption no longer have to install an additional I/O bus.

SERCOS control system

With TwinCAT as software PLC/NC, SERCOS cards, digital servo drives and Bus Terminals as I/O system, Beckhoff thus provides a complete PC-based control system for the SERCOS interface.

2.2 Hardware

The PCI cards for SERCOS interface FC7501 (single-channel) and FC7502 (double-channel) enable direct access to the SERCON816 ASIC. The driver for these passive cards is incorporated into the TwinCAT software and allows optimum access to the SERCOS interface. There are no unnecessary restrictions with regard to the number of bus devices and I/O data per device.

The power of TwinCAT comes into its own with this new interface generation:

- Up to 254 devices (servo drives or I/O modules, e.g. Bus Terminals with Bus Coupler BK7500)
- No restriction regarding assignment and length of the I/O data
- Exact synchronization between TwinCAT and SERCOS
- Cycle times up to 62,5 μ s are possible
- Synchronous process data communication
- Master and slave mode can be parameterized by software
- It is possible to have two parallel fieldbus channels on one card (2x SERCON816)
- Synchronization of both channels and other cards along with PC is possible
- Reading of bus configuration possible

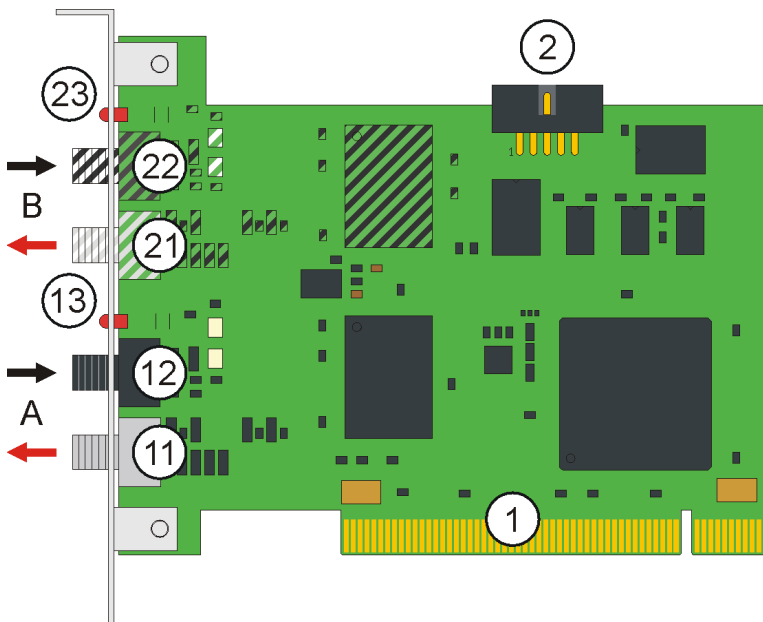


Fig. 2: FC7501 and FC7502 in revision B

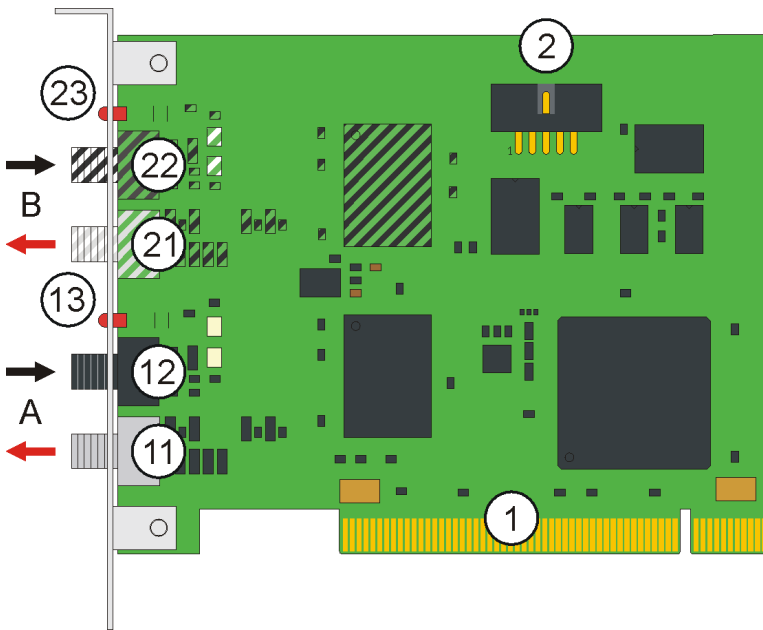


Fig. 3: FC7501 and FC7502 in revision C

- 1. PCI bus interface
- 2. Socket for connecting the sync cable
- 11. SERCOS output for connecting the outgoing optical fiber for optical fiber ring A
- 12. SERCOS input for connecting the return optical fiber for optical fiber ring A
- 13. Diagnostics LED for optical fiber ring A
- 21. SERCOS output for connecting the outgoing optical fiber for optical fiber ring B
- 22. SERCOS input for connecting the return optical fiber for optical fiber ring B
- 23. Diagnostics LED for optical fiber ring B

The hatched components for SERCOS channel B are not populated on the single-channel FC7501. Compared with revision B, revision C has a larger board corresponding to the standard height of PCI cards.

TwinCAT I/O provides configuration tools and Windows NT/2000 drivers for programs in any desired high level language (DLLs) and for Visual Basic applications (ActiveX). Applications with OPC interfaces can access the cards via an OPC server.

Diagnostics LED

The diagnostics LED of a fieldbus channel is on, if the data transfer on the optical fiber is disturbed.

2.3 Technical Data

	FC7501	FC7502
Fieldbus	SERCOS interface	
Number of fieldbus channels	1	2
Data transfer rate	2, 4, 8 or 16 Mbit/s	
Synchronization	Synchronization of several cards via ribbon cable	
Bus devices	254 max. per channel	
Cycle time	all supported by SERCOS interface (from 62.5 µs)	
Hardware diagnosis	1 LED per channel	
Interface to the PC	Plug and Play PCI Interface 32 bit, direct access to DPRAM and SERCON816 register	
Current consumption from the PCI bus	typically 180 mA	typically 285 mA
Dimensions	approx. 95 mm x 120 mm	
Permissible ambient temperature during operation	0° to 55 °C	

Ordering information

Order identifier	Product
FC7501	SERCOS interface PCI card, single-channel
FC7502	SERCOS interface PCI card, double-channel
Z1003	FSMA plug with knurled nut for 1000 µm plastic fiber
Z1100	Plastic optical fiber, single core, 1000 µm
Z1101	Plastic optical fiber, single core, 1000 µm with protective PU cladding and Kevlar strain relief
ZB7501	SERCOS master sync cable, for connecting SERCOS interface PCI cards of a PC

3 Installation

3.1 Installation of the SERCOS card in the PC

**Attention****Observe the ESD guidelines**

The SERCOS cards are supplied in ESD packaging. Follow the usual ESD guidelines for handling PC cards during installation!

1. Before installing the SERCOS card, switch off the PC and any external power supplies, and separate the PC from the mains.
2. Open the PC case.
3. Remove the protective caps of the optical fiber connections of the SERCOS card.
4. For a free PCI slot on the motherboard, remove the metal plate in the PC case.
5. Insert the SERCOS card into the free PCI slot and fix it with the screw or device provided. Ensure that there is sufficient space between the SERCOS card and other PC components, so that the Lightbus card cannot come into contact with other plug-in cards or memory components etc.
6. Close the PC case.
7. Connect the SERCOS cables with the optical fiber connections of the SERCOS card:
 - Light grey: outgoing SERCOS cable
 - Dark grey: return SERCOS cable
8. Connect the PC to the mains and switch it on.
9. After the PC has booted up, under Windows 2000 and Windows XP the Add Hardware Wizard will install a [PCI driver \[► 12\]](#), in order to integrate the SERCOS card into the plug and play interface of the operating system. Under Windows NT 4.0, this driver is not required.

The SERCOS card does not require an external power supply. It is supplied directly from the PC via the PCI bus. The power supply of the PC has to be adequate for meeting the [power requirement \[► 10\]](#) of the SERCOS cards, particularly if several SERCOS cards are installed.

SERCOS master sync cable

If a PC with more than one SERCOS card is used, the cards should be connected via a SERCOS master sync cable to ensure synchronization:

- To this end, plug the [ZB7501 \[► 10\]](#) sync cable into the [sockets \[► 8\]](#) provided at the upper edge of the SERCOS cards.
- Use the TwinCAT System Manager for specifying the [operating mode \[► 14\]](#) of all channels of the SERCOS cards to ensure synchronization.

3.2 Installation of the PCI driver

After installation of the SERCOS card, Windows 2000, for example, comes up with the following message during start-up:

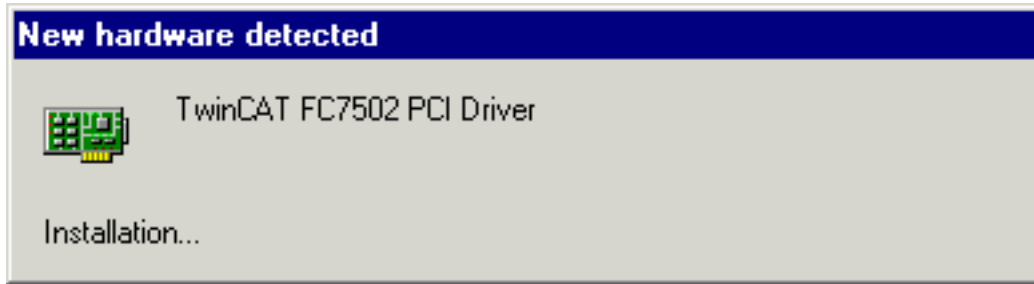


Fig. 4: Installation of the PCI driver

The PCI driver for the SERCOS card is supplied with the Beckhoff TwinCAT automation software.

Follow the instructions of the Add Hardware Wizard.

Under Windows XP, the PCI driver is installed in the same way.

Under Windows NT 4.0, the PCI driver is not required.

Example for the resources of an FC750x under Windows2000
(Control Panel / System / Hardware / Device Manager / TwinCAT PNP drivers / TwinCAT FC750x PCI driver / Resources):

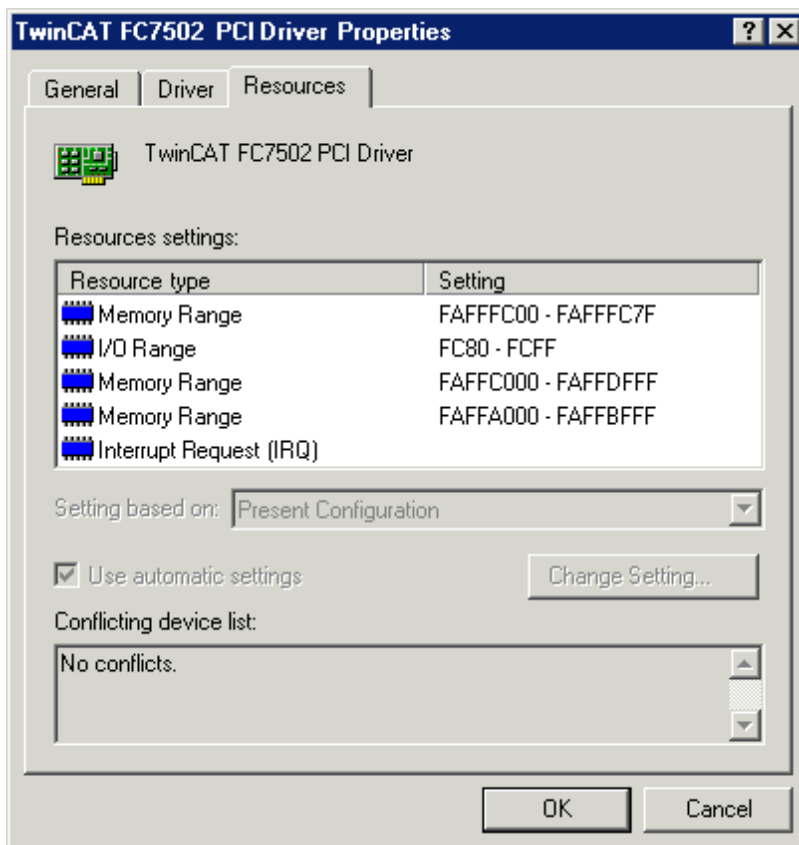


Fig. 5: Resources of the PCI driver



Note

IRQ is not used

The PCI bus allocates an IRQ to the SERCOS card (IRQ9 in the example). Although the IRQ is not used by the SERCOS card!

4 Configuration

4.1 Configuration

The FC7501 [▶ 8] is a single-channel and the FC7502 [▶ 8] a double-channel passive SERCOS card (SERCOS = **S**ERIAL **R**eal-time **C**OMMUNICATION **S**ystem) with PCI interface. They can be operated as Sercos masters and/or as Sercos slaves. The Sercos SERCON816 ASIC is used. It supports not only 2 and 4 MBaud, but also 8 and 16 MBaud.

Context menu

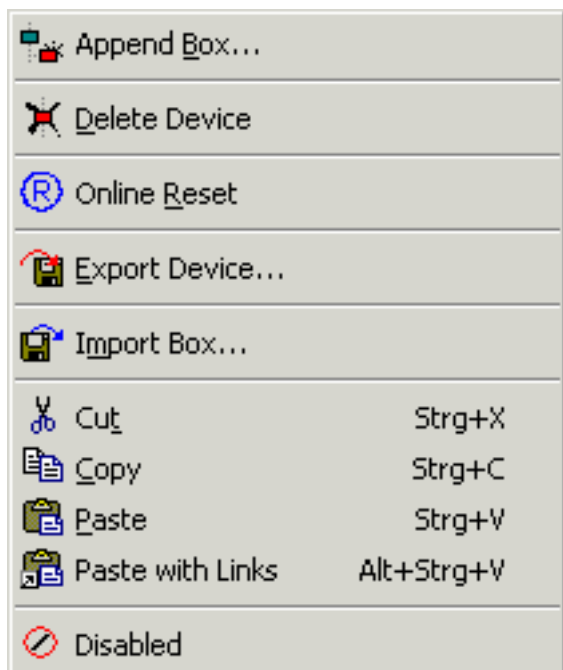


Fig. 6: Context menu

Append Box... <Insert>

Adds Sercos slaves (boxes):

Supported boxes	Description
BK7500	Bus Coupler
Sercos Axis	Sercos Axis

Delete Device...

Removes the FC750x fieldbus card and all subsidiary elements from the I/O configuration.

Online Reset

Initiates an online reset of the Sercos master, so that the phase will switch to phase 0 and will then return to what had previously been the current phase.

4.2 The FC750x tab

Fig. 7: The FC750x tab

PCI Slot / IRQ

Shows in which logical PCI slot the card was detected and which IRQ is assigned to it. The IRQ is unused.

Search...

Searches for all connected FC750x channels. Select those required. In the case of an FC7502 both channels A and B appear. These behave in logical terms like two FC7501 cards.

PCI-Cfg...

In which the address of the FC750x is set in the lower memory area (below 1 MB) of the PC.

Scan the bus...

The Sercos ring is scanned here, and all devices found are added to the device. In the case of Beckhoff boxes the configuration is read precisely.

Data rate

The Sercos baud rate is set here. 2 Mbit/s, 4 Mbit/s, 8 Mbit/s and 16 Mbit/s can be selected.

Transmission power

The power of the transmitter is set here, depending on the length of optical fiber being used.

Operation mode

The FC750x can be operated as a Sercos master and as a Sercos slave. In either of these operating modes, the card can be operated as the synchronous master (the PC and other synchronous devices receive their clock from the sync master) or as a sync slave (the card, or the card channel, receives the synchronization signal from the other channel or from another card over the sync cable [► 10]). There can only be one synchronous master within one PC. If both channels of a FC7502 are used, then only the A-channel (the channel closest to the motherboard) can be used as the sync master.

Start-up to Phase 4

If selected, then every time TwinCAT starts up, an attempt will be made to bring the Sercos bus into phase 4, and thus to perform cyclic data exchange. If this option is not selected, the card will remain in phase 2. It will then have to be placed into phase 4 at a later stage by ADS from, for example, the PLC.

Check Timing

If selected, then in each cycle the exact real-time behavior of access to the card is monitored. If not maintained (actual values are read too early, or set values are written too late) then a corresponding counter located in the process data is incremented. This monitoring has only a very small impact on the performance, so that there is no disadvantage to using it in normal applications. In applications with very short cycle times and where performance margins are very tight, however, it can be switched off.

Watchdog

The SERCON816 Sercos ASIC used has a hardware watchdog that monitors regular PC access, activating phase 0 if the accesses cease. The number of cycles that the watchdog will tolerate is given here. The watchdog is deactivated with a tolerance of 0.

NC Access Time

A figure is given here for the time required by the NC in each cycle for reading the actual values and writing the set values. This value is only used by the internal time slot calculation, so that possible time slot problems can be seen in advance (cf. Check Timing Errors).

NC Shift Time

The NC shift time can be used to delay the time at which the NC begins to read the actual values. The value gives the number of μs after the last AT. The default value of 50 μs ensures in normal cases that even if there is a small amount of jitter in the real-time system, the ATs, and therefore the actual values, have safely arrived at the master before the NC takes action. If more than one Sercos ring is in use, it may be necessary to adjust this value, since the NC accesses all the rings at more or less the same time, but the connected devices in particular rings mean that the last ATs arrive at different times. Since the Sercos rings on the bus are synchronized in hardware, the following rule applies: The NC shift time should be set on the various rings in such a way that the resulting t_{NCAccess} time (see timing) is about the same on all the rings. In addition to this, the NC shift time should not be much less than about 20 μs on any ring.

Cycle-Time(3-4)

The cycle time of the highest priority associated task is indicated here. This is used in phases 3 and 4.

Cycle-Time(0-2)

The cycle time in phases 0 to 2 is given here. This is used for the bus start-up.

The following values make it possible to influence the internal time slot calculation, to make modifications of a few μs in the event of communication problems or loading difficulties. However, this should not be done without the appropriate Sercos expertise, so that the effects can be estimated.

JT1 User

The value set here alters the jitter JT1 used in the internal time slot calculation.

JT2 User

The value set here alters the jitter JT2 used in the internal time slot calculation.

JTSCyc User

The value set here alters the jitter JTSCyc used in the internal time slot calculation.

T3 User

The value set here alters the time T3 used in the internal time slot calculation.

T4 User

The value set here alters the time T4 used in the internal time slot calculation.

4.3 The Timing (Online/Offline) tab

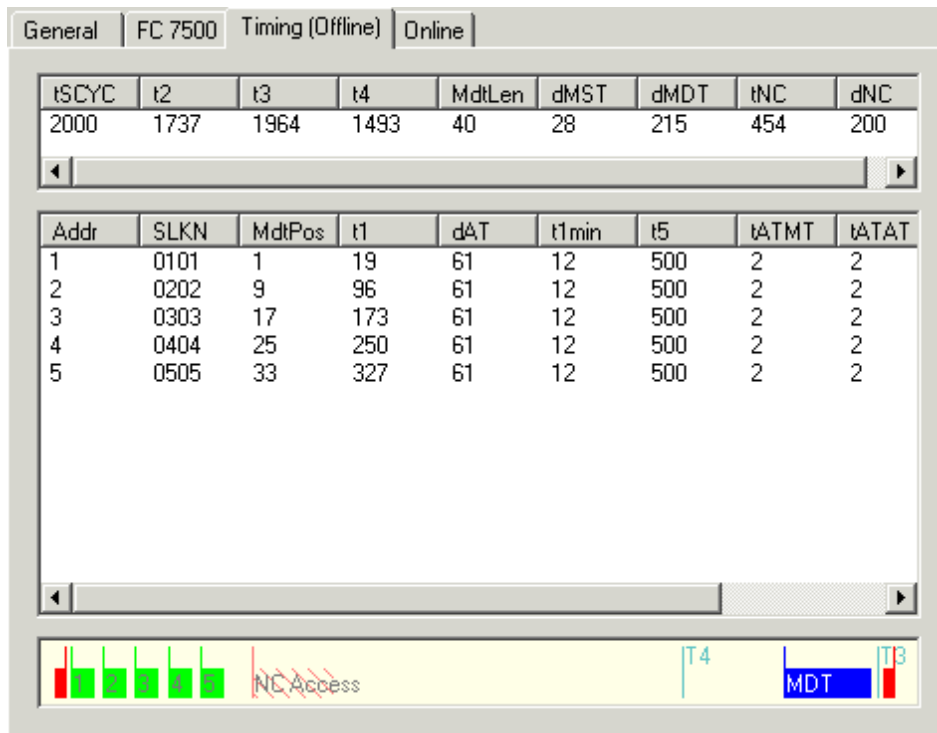


Fig. 8: The Timing (Offline) tab

The Timing tab provides internal details of the time slot calculation. A distinction is made between an online and an offline mode, since parameters are also read from the devices and included in the calculation of the time slot. In offline mode (TwinCAT is stopped) default values are used for the timing values that are normally read from the devices, so that the result of this calculation can differ slightly from that obtained with the true values. The offline calculation does however as a rule provide a very good estimate of the bus timing. In online mode (TwinCAT is running and the Sercos Bus is in phase 3 or 4) the exact values are displayed, and provide the expert user with very precise information about the timing on the bus.

The diagram in the lower section provides a good summary of the bus loading being generated, and over the capacity still available. A Sercos cycle is displayed between the two red master control telegrams (MST). After the MST the devices first send their drive telegrams (green), and after the NC shift time the NC access time (dotted region) starts, in which the NC accepts the actual values and transmits new set values. The subsequent clear region leading up to the Master Data Telegram (MDT, blue) indicates "bus capacity that is still free", and can be used for other devices or for additional data associated with the existing devices.

Not long after the MDT the master sends another MST, so starting the next cycle. Times T3 and T4 indicate when the devices should all simultaneously accept the set values or acquire the actual values.

4.4 Online tab

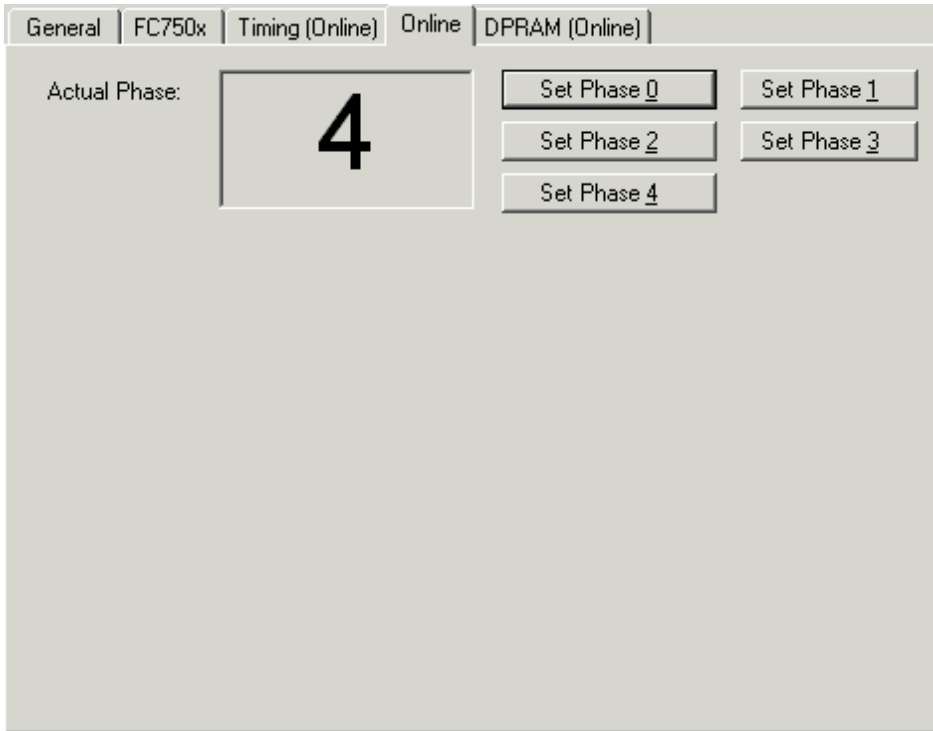


Fig. 9: Online tab

The Online tab makes it possible to find the current phase of the Sercos ring and to change it. Three red dashes "---" for the phase indicate a ring that is not closed. A phase indication like "2->3" indicates that a change of phase is currently in progress, and that it is possible that this may take some time.

4.5 DPRAM (Online) tab

If TwinCAT is active, direct read access to the DPRAM of the fieldbus cards is provided for diagnostic purposes.

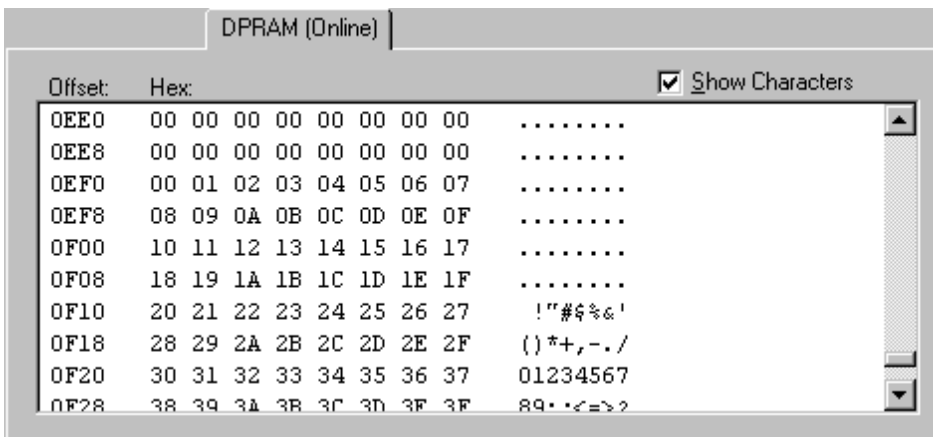


Fig. 10: DPRAM (Online) tab?

Following the SERCON816 DPRAM, the ASIC registers appear from address 0x1000.

5 Diagnostic inputs

The FC750x has a variety of diagnostic variables available automatically. They describe the state of the card and of the Sercos ring:

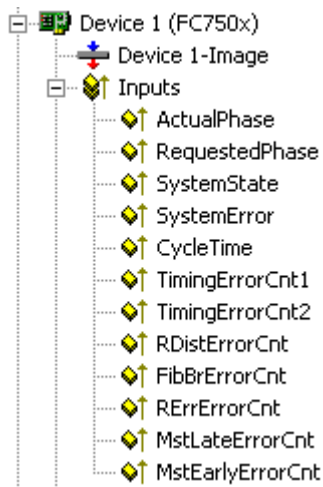


Fig. 11: Diagnostic inputs

ActualPhase

The current phase of the Sercos ring is displayed.

RequestedPhase

The phase currently being requested (e.g. by the PLC) is displayed. The card or driver is presently attempting to activate this phase.

SystemState

Gives more precise information about the current phase:

0xE001 = Phase 0
 0xE002 = Phase 1
 0xE003 = Phase 2
 0xE004 = Phase 3
 0xE005 = Phase 4
 0xE008 = Break
 0xE011 = Phase switch 0 -> 1
 0xE012 = Phase switch 1 -> 2
 0xE013 = Phase switch 2 -> 3
 0xE014 = Phase switch 3 -> 4

SystemError

Indicates the current error state:

0x0000 = No error
 0x8005 = Drive addresses are incorrect
 0x8006 = HS-timeout (service channel)
 0x8007 = Double AT-failure
 0x8009 = Optical fiber bus is interrupted
 0xD002 = Break
 0xD003 = Switch from 2->3 failure (S-0-0127)
 0xD004 = Switch from 3->4 failure (S-0-0128)
 0xF001 = Configuration error (actual/nominal channel)
 0xF002 = Error in the time slot calculation
 0xF003 = Incorrect phase setting by the NC
 0xF004 = Internal error
 0xF005 = Error lifecounter

0xF008 = Double MDT-failure
0xF009 = Double MST-failure
0xF00A = Sync-In signal failure

TimingError1

A counter that is incremented if the NC accesses the actual values too early ("Check timing" must have been selected).

TimingError2

A counter that is incremented if the NC supplies new set values too late ("Check timing" must have been selected).

RDistErrorCnt

An error counter that counts telegrams received in a damaged state (cf. RDIST in the SERCON816 Reference Manual). The cause can be an incorrect baud rate.

FibBrErrorCnt

An error counter that counts telegrams received in a damaged state (cf. FIBBR in the SERCON816 Reference Manual). The cause can be an incorrect baud rate.

RRerrErrorCnt

An error counter that counts telegrams that have been lost or that are received at the wrong time (cf. RERR in the SERCON816 Reference Manual).

MstLateErrorCnt

An error counter that counts MSTs that are received too late (cf. MSTLATE in the SERCON816 Reference Manual).

MstEarlyErrorCnt

An error counter that counts MSTs that are received too early (cf. MSTEARLY in the SERCON816 Reference Manual).

6 Appendix

6.1 Support and Service

Beckhoff and their partners around the world offer comprehensive support and service, making available fast and competent assistance with all questions related to Beckhoff products and system solutions.

Beckhoff's branch offices and representatives

Please contact your Beckhoff branch office or representative for [local support and service](#) on Beckhoff products!

The addresses of Beckhoff's branch offices and representatives round the world can be found on her internet pages:

<http://www.beckhoff.com>

You will also find further [documentation](#) for Beckhoff components there.

Beckhoff Headquarters

Beckhoff Automation GmbH & Co. KG

Huelshorstweg 20
33415 Verl
Germany

Phone:	+49(0)5246/963-0
Fax:	+49(0)5246/963-198
e-mail:	info@beckhoff.com

Beckhoff Support

Support offers you comprehensive technical assistance, helping you not only with the application of individual Beckhoff products, but also with other, wide-ranging services:

- support
- design, programming and commissioning of complex automation systems
- and extensive training program for Beckhoff system components

Hotline:	+49(0)5246/963-157
Fax:	+49(0)5246/963-9157
e-mail:	support@beckhoff.com

Beckhoff Service

The Beckhoff Service Center supports you in all matters of after-sales service:

- on-site service
- repair service
- spare parts service
- hotline service

Hotline:	+49(0)5246/963-460
Fax:	+49(0)5246/963-479
e-mail:	service@beckhoff.com

List of illustrations

Fig. 1	SERCOS interface optical fiber ring	7
Fig. 2	FC7501 and FC7502 in revision B.....	8
Fig. 3	FC7501 and FC7502 in revision C	9
Fig. 4	Installation of the PCI driver.....	12
Fig. 5	Resources of the PCI driver.....	12
Fig. 6	Context menu	13
Fig. 7	The FC750x tab	14
Fig. 8	The Timing (Offline) tab	16
Fig. 9	Online tab	17
Fig. 10	DPRAM (Online) tab?	17
Fig. 11	Diagnostic inputs	18